



## Lake Effect Snow Sunday & Monday

### Neoweather Weather Consulting Forecast Analysis

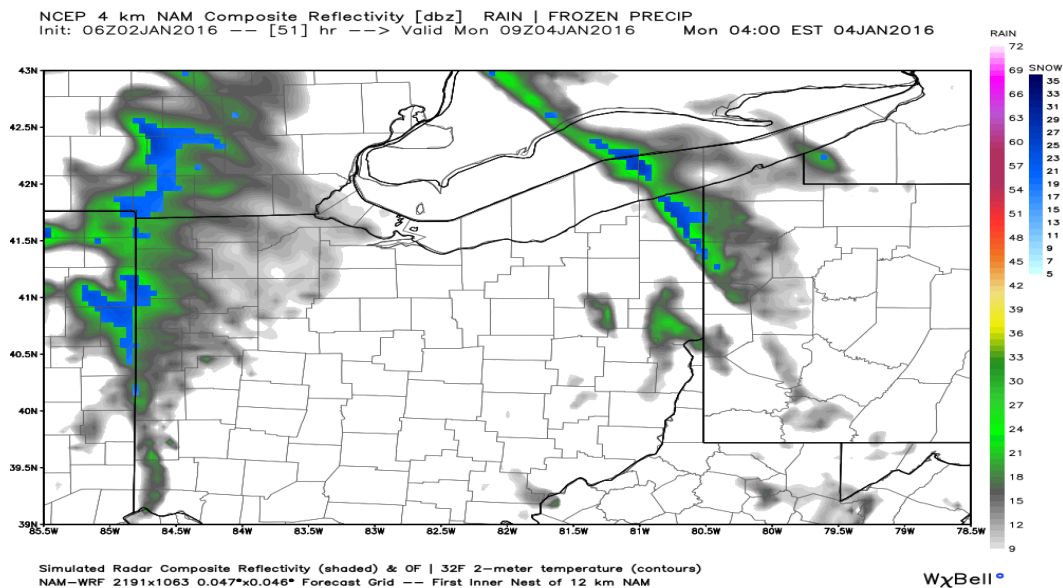
By: Brian Ivey & Jim Sullivan

Neoweather Forecaster

January 2, 2016

Lake effect snow showers will then be the weather story through Monday evening across a good portion of the area. On Sunday the flow will initially be westerly in the morning, carrying any snow to just the main Snowbelt east of Cleveland in eastern Cuyahoga, Lake, Geauga, and Ashtabula Counties, however by Sunday afternoon the flow will go more northwest, bringing a chance of snow showers in farther south and west to parts of Lorain, Medina, western Cuyahoga, Summit, Portage, and Trumbull Counties. High temperatures on Sunday will be in the low to mid 30s. Lake effect conditions on Sunday will be marginal so only light snow amounts are expected, maybe an inch or so in the heart of the Snowbelt but just some local cosmetic coatings elsewhere by Sunday evening.

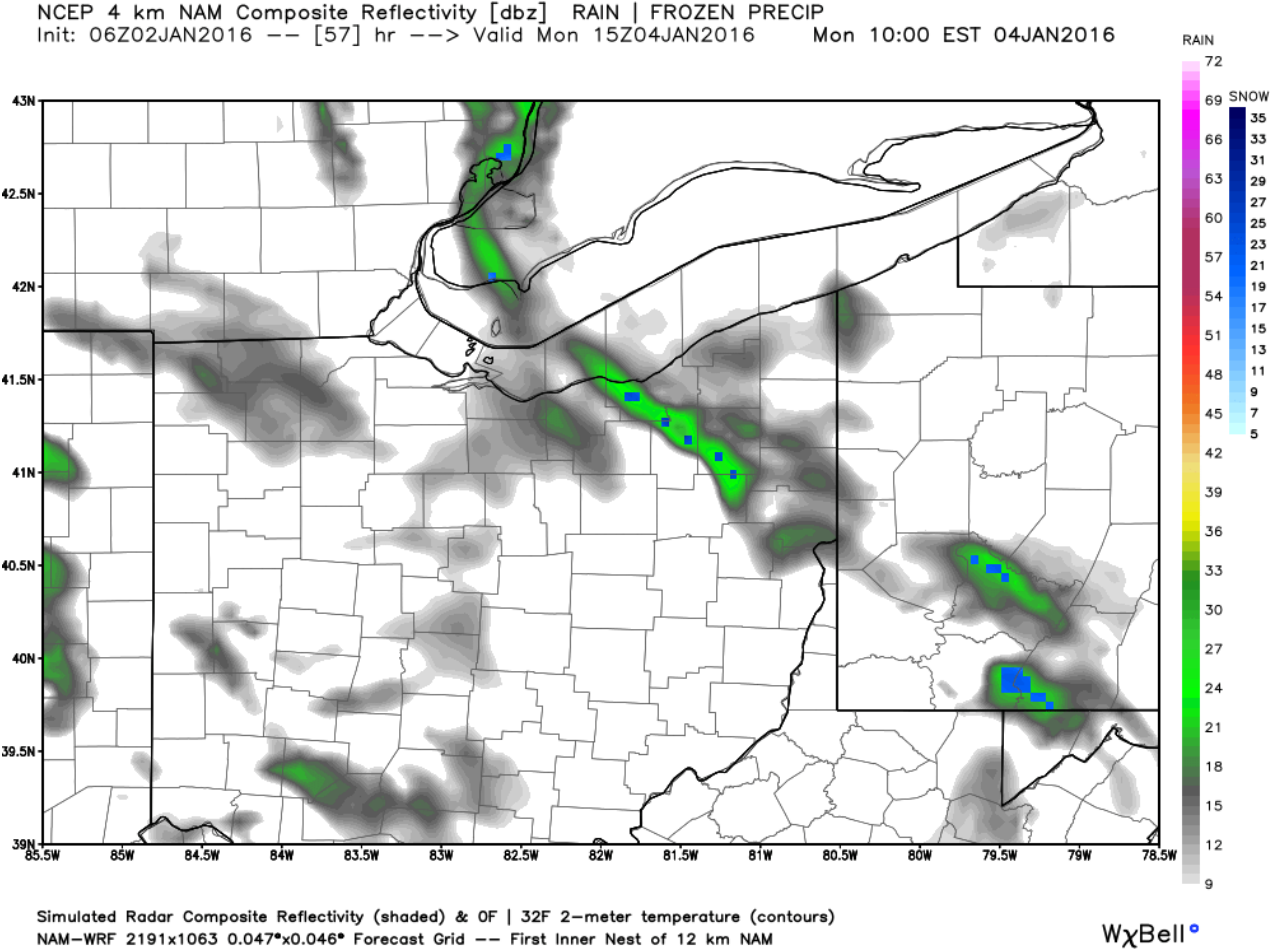
Conditions for lake effect snow will gradually improve Sunday night as the winds go to a more north-northwesterly direction. This should allow snow showers to affect much of the area from Sandusky to Mansfield points east at times. Snow amounts Sunday night will be light, generally an inch or less, due to the north-northwest winds cutting across the narrower part of Lake Erie and limiting the amount of moisture picked up. However, we will have to watch where bands from moisture from both Lake Huron and Lakes Michigan/Superior setup Sunday night, as locally moderate amounts of snow could fall where this occurs:



It currently looks like the Lake Huron band will set up in the “primary” Snowbelt east of Cleveland for several hours Sunday night, somewhere in Lake, Geauga, Ashtabula, Portage, or Trumbull Counties.

The band may waver a bit which could keep amounts down, however locations impacted by this band may see a few inches of snow Sunday night. The Lakes Michigan/Superior band may bring some slightly better snow showers to the west side of town and also the “secondary” Snowbelt south of Cleveland Sunday night. This band will probably be less intense and may also waver through the night, but could bring locally a couple inches of snow west and south of town Sunday night. Between bands there will just be off and on light snow showers with only minor accumulations. Lows Sunday night will be in the mid 20s, which will allow snow to stick to pavement easily.

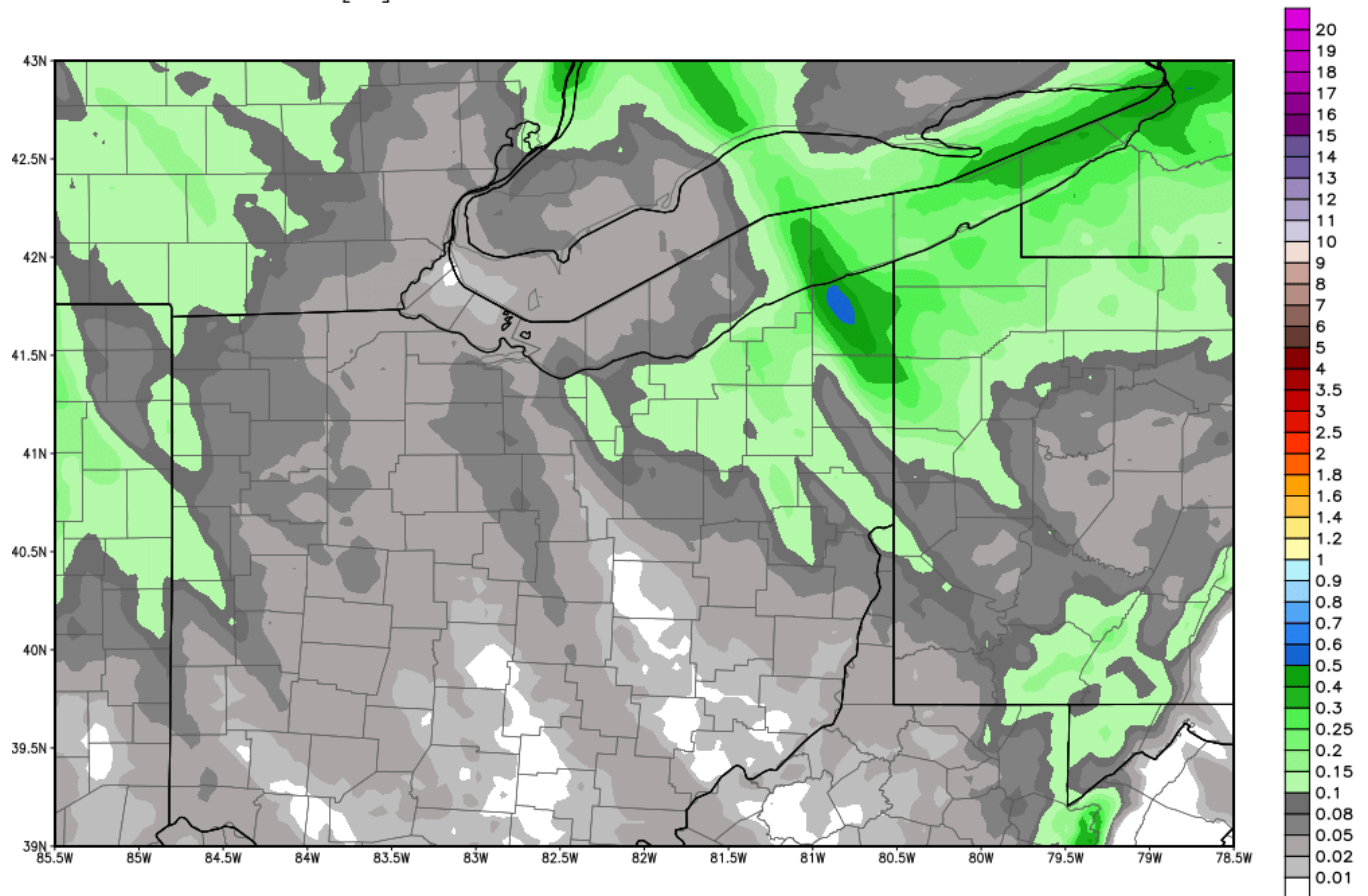
On Monday the winds shift to due north or even north-northeast, which will cause the bands from lakes to our north to swing to the west. The Lake Michigan/Superior band will likely shift west of our coverage area while the Lake Huron band swings west through the Cleveland and Akron metros and likely settles on the west side of town by Monday afternoon:



The bands will be on the move Monday which will keep accumulations from getting out of hand, however there will be a period of time where the snow could be quite intense under the bands from the lakes to our north Monday morning (especially the Lake Huron band). Outside of the bands, there should still be light to occasionally moderate snow showers Monday morning as a disturbance aloft enhances the snow.

The snow should all slowly taper Monday afternoon and evening. What this all means is a lot of areas will see some accumulating snow on Monday, but that no one spot will see a ton of snow thanks to the bands moving. Expect about an additional 1-3" of snow will fall in the higher terrain on Monday from northern Richland and Ashland Counties east across parts of Cuyahoga, Medina, Summit, southern Lake, Geauga, Portage, inland Ashtabula and Trumbull Counties. Lower elevations and locations farther south and west will see amounts of less than 1" on Monday. Storm total amounts outside of the secondary snow belt will be generally under an inch (except for maybe a couple in the higher terrain), but the Snowbelt looks to see a general 2-5" in the higher terrain. Here is a look at where the heavier snow may fall (darker colors indicate potentially more snow on this model):

NCEP 4km NAM Accumulated Precipitation [inches] max:0.6 in  
Init: 06Z02JAN2016 -- [60] hr --> Valid Mon 18Z04JAN2016 Mon 13:00 EST 04JAN2016



NAM-WRF 2191x1063 0.047°x0.046° Forecast Grid -- First Inner Nest of 12 km NAM

WxBell

Temperatures will fall from the upper 20s to the lower 20s during the day on Monday and it will be blustery so the snow will likely blow around some.

**THE BOTTOM LINE:** Lake effect snow showers will waffle back and forth the snow belt Sunday morning into the afternoon before becoming more widespread across the primary and secondary belts. Multiple snow bands will be around Sunday night and Monday for much of Northeast Ohio. They will waffle around, but a couple inches of snow is possible in the higher terrain outside of the main snow belts where squalls persist. 3-5" is likely where bands persist in the secondary and primary snow belt by Monday evening.

Temperatures will be generally in the 20s, so things will accumulate on all surfaces.

*- Forecaster's Brian Ivey and Jim Sullivan*